

KGMS11 Smart Manhole Sensor_4G Data Sheet V3.0

Wireless sensors for detecting manhole status

Date: April 19, 2024

Overview

The KGMS11 smart manhole sensor is specially designed for the detection of manhole covers such as electrical and sewage system.

Mainly used for manhole cover movement detection.

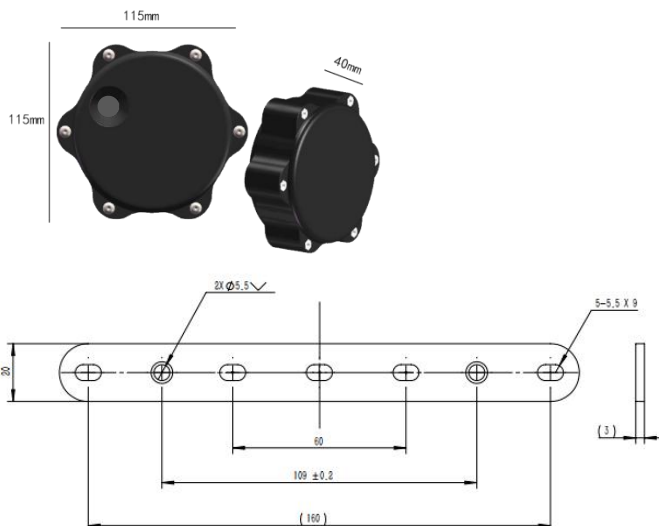


It is integrated with wireless module 4G. Data is uploaded to cloud server in protocol TCP or other customized protocol.

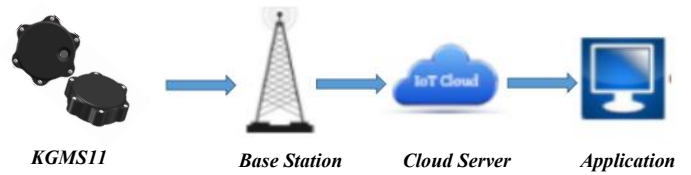
Key Features

- ✓ Manhole status detection
- ✓ Remote monitoring through wireless module, global frequency bands available.
- ✓ Inner battery 8500mAh, low power consumption.
- ✓ IP68 for outdoor using.
- ✓ TCP protocol with SDK in python, java-script.
- ✓ Dashboard monitoring / Email notification / SMS notification (platform related)
- ✓ Support Web and Android application
- ✓ Easy to install

Mechanical Size



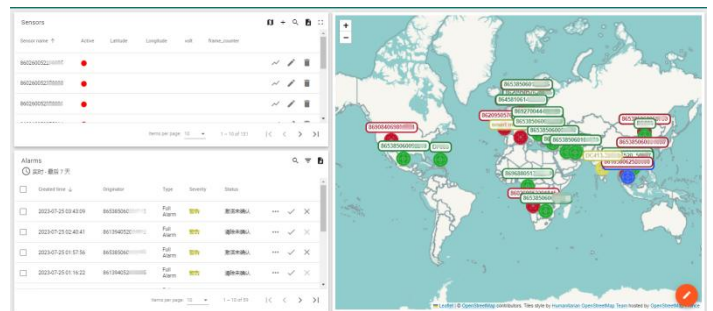
Network Diagram



Specifications

- ✓ Dimension: 115*115*40mm
- ✓ Weight: 450g
- ✓ Color: Black
- ✓ Material: ABS
- ✓ Principle: Acceleration detection
- ✓ Angle accuracy: 2°
- ✓ Wireless Communication: 4G
- ✓ Band: LTE-TDD:B34/B38/B39/B40/B41, LTE-FDD:B1/B3/B5/B7/B8/B20/B28¹ optional.
- ✓ Internal Battery: Non-rechargeable Lithium Thionyl Chloride Battery, ER26500*1, 8500mAh@ 3.6V
- ✓ Battery life²: More than 3 years (upload 4 times every day, cycle detection time 10min)
- ✓ Temperature range: -30°C to 85°C
- ✓ Protection Level: IP68

Application



Users can check data our software application (Web and Android application) or your own applications. We will provide protocol and manual without signing NDA after you place order.

¹ Use corresponding module according to different frequency bands.

² Battery life is related to the ambient temperature and the strength of the wireless signal.

KGMS11 manhole Detector_4G Data Sheet V3.0

Wireless sensors for detecting manhole status

Date: April 19, 2024

Installation








Installation steps:

User can fix the sensor to manhole cover with metal bracket and screws. Then reset the sensor by magnet and place the cover back on manhole within 1min.



Packing List

Item	Picture	Quantity (Piece)
KGMS11		1
ER26500 battery		1
Screws (M4*30)		2
Serial Cable for configuration		1 for each order
Magnet		1 for each order
Metal Bracket		1

